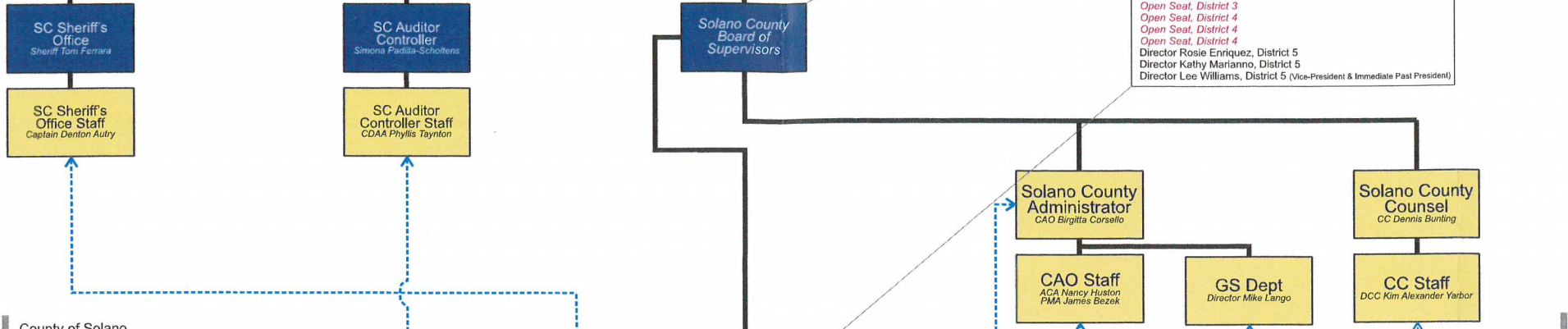




Citizens/Voters of Solano County

Solano County Board of Supervisors
 Supervisor Erin Hannigan, District 1
 Supervisor Monica Brown, District 2
 Supervisor Jim Spering, District 3
 Supervisor John Vasquez, District 4 (Chair)
 Supervisor Skip Thomson, District 5

Solano County Fair Association Board of Directors
 Director Norma Placido, District 1
 Director Dennis Yen, District 1 (President)
 Open Seat, District 1
 Director Kari Birdseye, District 2
 Director Carole Paterson, District 2 (Treasurer)
 Open Seat, District 2
 Director Ray Simonds, District 3 *Note: Will resign on Mar 7/2/18 12:00 am*
 Open Seat, District 3
 Open Seat, District 3
 Open Seat, District 4
 Open Seat, District 4
 Director Rosie Enriquez, District 5
 Director Kathy Marianno, District 5
 Director Lee Williams, District 5 (Vice-President & Immediate Past President)

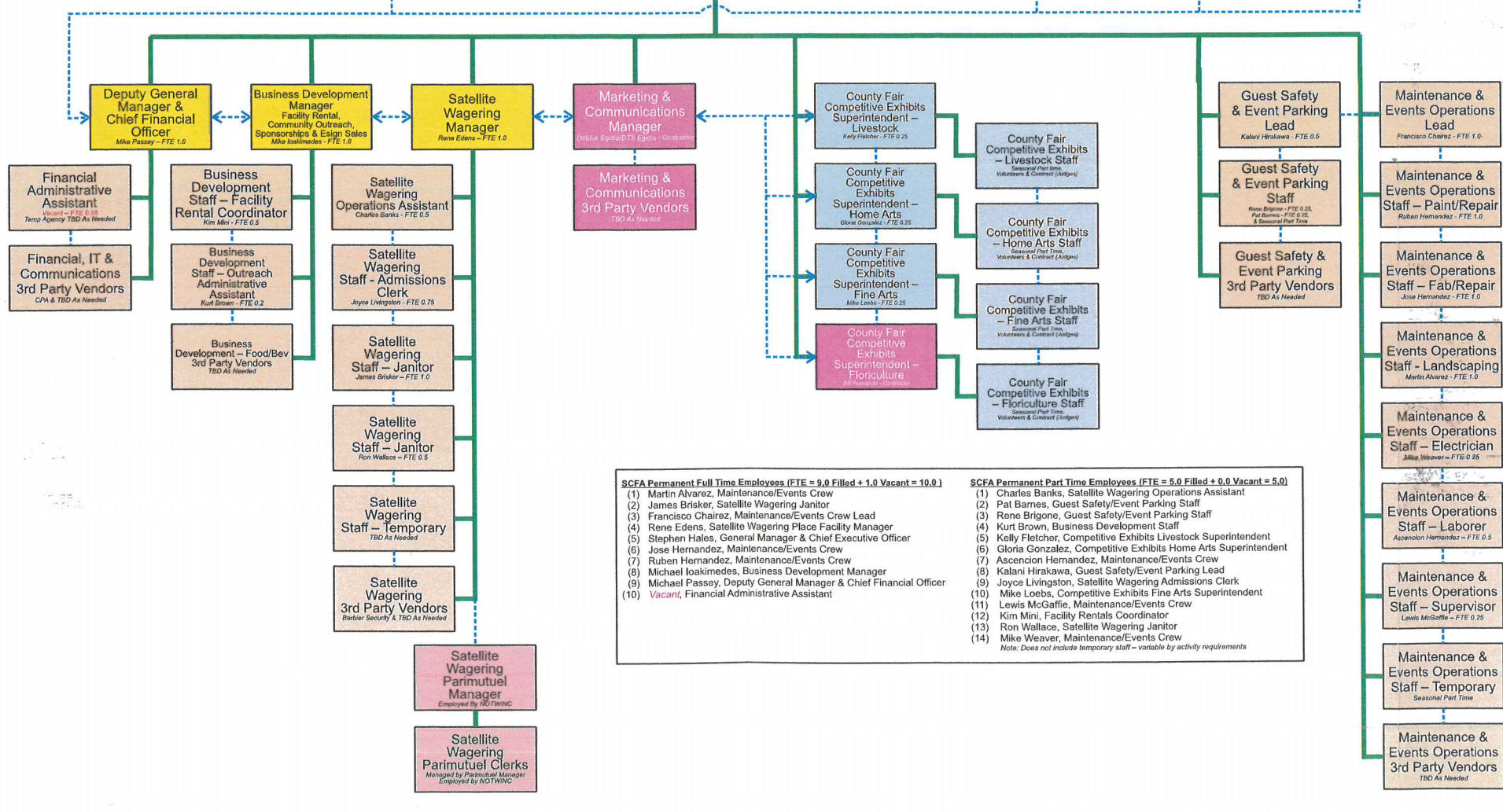


County of Solano
 Solano County Fair Association

Solano County Fair Association Board of Directors

Fair Association Chief Executive Officer/Secretary & Fairgrounds General Manager
 Stephen Hales - FTE 1.0

California Department Food & Agriculture



- | SCFA Permanent Full Time Employees (FTE = 9.0 Filled + 1.0 Vacant = 10.0) | SCFA Permanent Part Time Employees (FTE = 5.0 Filled + 0.0 Vacant = 5.0) |
|---|--|
| (1) Martin Alvarez, Maintenance/Events Crew | (1) Charles Banks, Satellite Wagering Operations Assistant |
| (2) James Brisker, Satellite Wagering Janitor | (2) Pat Barnes, Guest Safety/Event Parking Staff |
| (3) Francisco Chairez, Maintenance/Events Crew Lead | (3) Rene Brigone, Guest Safety/Event Parking Staff |
| (4) Rene Edens, Satellite Wagering Place Facility Manager | (4) Kurt Brown, Business Development Staff |
| (5) Stephen Hales, General Manager & Chief Executive Officer | (5) Kelly Fletcher, Competitive Exhibits Livestock Superintendent |
| (6) Jose Hernandez, Maintenance/Events Crew | (6) Gloria Gonzalez, Competitive Exhibits Home Arts Superintendent |
| (7) Ruben Hernandez, Maintenance/Events Crew | (7) Ascencion Hernandez, Maintenance/Events Crew |
| (8) Michael Ioakimedes, Business Development Manager | (8) Kalani Hirakawa, Guest Safety/Event Parking Lead |
| (9) Michael Passsey, Deputy General Manager & Chief Financial Officer | (9) Joyce Livingston, Satellite Wagering Admissions Clerk |
| (10) Vacant, Financial Administrative Assistant | (10) Mike Loeb, Competitive Exhibits Fine Arts Superintendent |
| | (11) Lewis McGaffie, Maintenance/Events Crew |
| | (12) Kim Mini, Facility Rentals Coordinator |
| | (13) Ron Wallace, Satellite Wagering Janitor |
| | (14) Mike Weaver, Maintenance/Events Crew |
- Note: Does not include temporary staff - variable by activity requirements*